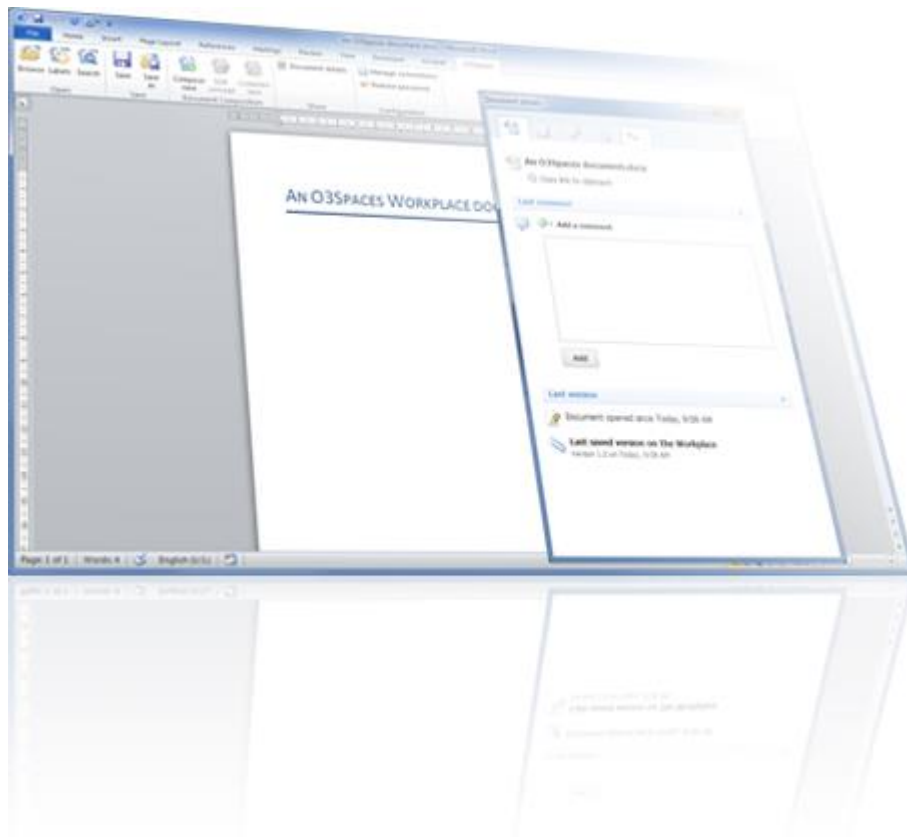




O3Spaces Office Plug-in 1.2.8

Release notes



O3Spaces Office Plug-in 1.2.8

Release Notes

Notice:

- Before installing and using the O3Spaces Software read the '*O3Spaces Workplace End User License Agreement*' carefully.
- **By activating the O3Spaces Software you agree to the terms and conditions as contained in this agreement.**

© 2006, 2014 O3Spaces B.V.

All product names, logos, brands and any other trademarks contained in this document are the property of their respective owners.

Table of Contents

Installing the O3Spaces Office Plug-in 1.2.8.....	3
Notes before updating the plug-in to version 1.2.8	3
Installing the plug-in.....	3
O3Spaces Microsoft Office Integration 1.2.8	3
Changes in plug-in 1.2.8	4
Improvements in plug-in 1.2.8.....	4
Resolved defects in plug-in 1.2.8	4
Notes of plug-in 1.2.8.....	5
Previous changes in plug-in	5
Improvements in previous versions of the plug-in.....	5
Resolved defects in previous versions of the plug-in	7
Other changes in previous versions of the plug-in.....	7
Installation & Configuration.....	7
Optional configuration	9
Network Deployment.....	9
No Microsoft Outlook integration	9
O3Spaces Composer	10
Document Composition.....	10
System Requirements.....	10
Contact O3Spaces.....	11
Disclaimer	11

Installing the O3Spaces Office Plug-in 1.2.8

This document lists the most important new features, improvements and resolved defects in O3Spaces Office plug-in 1.2.8.

Notes before updating the plug-in to version 1.2.8

Compatibility: This document is only applicable for the O3Spaces plug-in version 1.2.8 for Microsoft Office 2007, Microsoft Office 2010 and Microsoft Office 2013.

The plug-in version 1.2.8 is compatible with O3Spaces versions 4.3 to 5.5.

This plug-in does not interact with the Workplace Assistant.

Installing the plug-in

1. Download a compatible 1.2.8 plug-in resource from <https://support.o3spaces.com>.
2. Extract all files and run the file called '**setup.exe**'.

A detailed installation instruction is described in section '[Installation & Configuration](#)'.

O3Spaces Microsoft Office Integration 1.2.8

This O3Spaces Office plug-in allows basic interaction with O3Spaces Workplace, such as opening a document from the Workplace directly and publishing documents to the Workplace directly from

1. Microsoft Word
2. Microsoft Excel
3. Microsoft PowerPoint.

The plug-in incorporates functionality to view and add comments, view and compare versions and to view and complete task of opened documents.

Also Template Management and document Composer options are integrated in the plug-in. Several Workplace server connections can be managed in the Office environment.

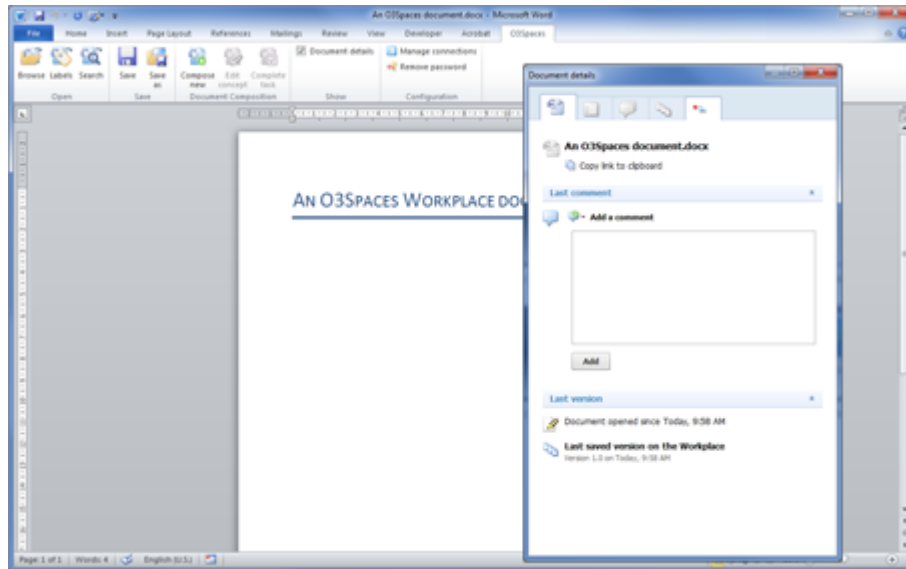


Figure 1 Microsoft Word with the Workplace ribbon and document details pane.

Note: The Office plug-in does not integrate with Microsoft **Outlook** 2007, 2010 and 2013.

Changes in plug-in 1.2.8

Improvements in plug-in 1.2.8

The main new improvements in O3Spaces Office plug-in version 1.2.8 are:

- Support for MS Office 2013.

Resolved defects in plug-in 1.2.8

The most important resolved defects in O3Spaces Office plug-in version 1.2.8 are:

- Files residing in a directory that has a dot at the end of its name cannot be opened.

Notes of plug-in 1.2.8

- Note:** Configuring **text modifiers** for a PlainText or RichText field in a **Composer template** requires an up to date 5.X server (version 5.0 or newer). Otherwise errors may occur or the template may become corrupt.
- Note:** Configuring **'disable generation'** for a RichText field in a **Composer template** requires an up to date 5.X server (version 5.0 or newer). Otherwise errors may occur or the template may become corrupt.
- Note:** Unsetting a binding of a **HeaderFooter** or **Style** variable in a **Composer template** requires an up to date 5.X server (version 5.0 or newer). Otherwise errors may occur.

Previous changes in plug-in

Improvements in previous versions of the plug-in

The main improvements in previous versions of the O3Spaces Office plug-in are:

- More stable version.
- Disable use of proxies (when a proxy is used, it will be bypassed by the plug-in).
- Support browser based authentication from the Office plugin.
- Handle paths comparisons in a case sensitive way. Preventing troubles if a different app-data location is used.
- Composer Designer improvements
 - On opening a document template in Word, the fields from a related master Composer-profile are merged and available in the Document Generation panel.
 - Automatic fix of the file-type extension in the download completion step if this extension is not entered.
 - Extra option in the download completion step to open the generated document directly after downloading.
 - Remember the last used download location in the download completion step.
 - Support for PlainText text modifiers for content controls in document templates (*for example start with a capital*).
 - Support for RichText LayoutModifiers for content controls in document templates to enable inserting Word-documents with multiple sections. Sub options:
 - Keep source text formatting of inserted document (*do not apply formatting style of the target template*).
 - Import (multiple) sections of the inserted document.

- Import headers and footers of the inserted document (*ignore the header footers settings of the target document for the inserted sections*)

Warning: Configuring **text modifiers** for a PlainText or RichText field in a **Composer template** requires an up to date 5.X server (version 5.0 or newer). Otherwise errors may occur or the template may become corrupt.

- Support to disable composer generation for included RichText documents (*for example useful in attachments*).

Warning: Configuring **'disable generation'** for a RichText field in a **Composer template** requires an up to date 5.X server (version 5.0 or newer). Otherwise errors may occur or the template may become corrupt.

- Improved support for iteration elements in document templates.
 - New iteration index filter (show only specified iterations).
 - Improved table row iterations.
 - Improved support for nested iterations.
- More flexibility in using HeaderFooter and Style elements in document templates (*for example use a variable from a container*).
- Unset a HeaderFooter and Style binding in a document template.

Warning: Unsetting a binding of a **HeaderFooter** or **Style** variable in a **Composer template** requires an up to date 5.X server (version 5.0 or newer). Otherwise errors may occur.

- Additional option to configure another HeaderFooter binding for a section in a document template.
- Display the full display name of a variable next to the variable itself.
- Composer improvements
 - Extra option to open a file immediately after downloading (*after completing a Composer wizard*).
 - Use the current server-connection on opening a Composer dialog.
- Configuration
 - Support to change the default menu-name (O3Spaces) of the plug-in. Can be changed in the Windows Registry.
 - Support to change the default size of the Composer windows. (fixed size or full screen). Can be changed in the Windows Registry.

Resolved defects in previous versions of the plug-in

The most important resolved defects in previous versions of the O3Spaces Office plug-in are:

- Time-out messages when connection is refused for a short time.
- Word:
 - Save a new document from Word to the Workplace while another Word document is focused in will save the wrong file-contents (of the focused document) to the Workplace.
 - Embed Excel document in Word document fails (if plug-in is installed)
- Excel:
 - Undesired Num Lock and formula behavior in Excel plug-in after opening excel files from the Workplace.
 - Pressing the save button in the Workplace ribbon of Excel 2007, does not actually save the workbook.
 - Close Excel document, but do not close Excel application will not publish the content changes to the file-version in the Workplace.
 - Data loss in Excel documents while working in Workplace documents and in local documents the same time. (only in specific scenario's).
- Composer defects:
 - Completion fails with a 'tempstore completion' Composer profile.
 - Completion can fail if multiple server-connections are configured.
 - Office plugin can't handle long filenames.
 - RichText in a table cell does not work when control is the only element in the cell
 - Paragraph styling of Composer content-controls is lost after Composer-properties of content control are viewed.

Other changes in previous versions of the plug-in

- The section 'New' is not visible anymore in the O3Spaces Ribbon. The 'Document Composition' section can be used to create new documents.

If needed the 'New' section can be configured to be visible again in the Windows Registry.

Installation & Configuration

The installation of the Microsoft Office plug-in is very straightforward and consists of a couple of steps.

1. Download a compatible plug-in resource from <https://support.o3spaces.com>.
2. Extract all files and run the file called 'setup.exe'. A welcome dialog will pop up. The installer will guide you through the steps needed to install the plug-in.

Note: Before starting the installation please make sure that all Microsoft Office applications and your browser are closed.

3. On the welcome dialog click 'Next' to proceed with the installation.

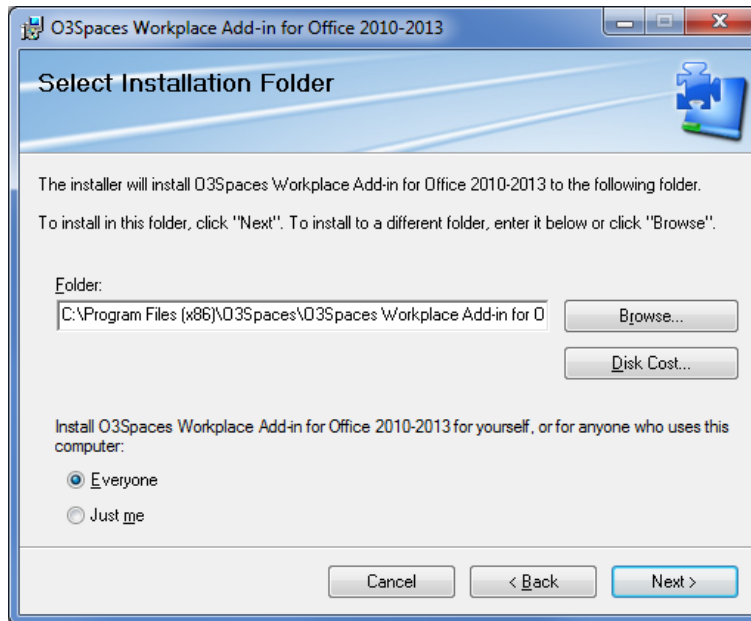


Figure 2 O3Spaces Workplace add-in installation wizard

4. Select the Installation folder you want to use to install the plug-in and choose for whom the plug-in should be installed.
It is recommended to install the plug-in for all users of the computer. Afterward click on the 'Next' button to proceed with the installation.
5. After confirming the installation, the actual installation will start.

Note: The installer will check for all required dependencies automatically. If a dependency is not available, it will be installed or instructions are given how to install the specific dependency.

6. When the installation is complete click 'Close' the close the dialog, you can get started with the plug-in.

Warning: All running Office instances and the browser with the O3Spaces Spaces environment must be restarted before the Office integration will work properly.

Optional configuration

By default all the O3Spaces ribbon sections are visible after installing the plug-in.

If needed the visibility of the ribbon sections (Open, Save, New, Document Composition and Configuration) can be configured in user registry settings. Ask your system administrator to change this.

Tip: [More detailed information about the installation and extra configuration options are described in the document 'O3Spaces Office_Integration_Info_1.2.8.pdf'](#)

Network Deployment

For installation of the plug-in in network environments, please contact O3Spaces to discuss a suiting installation procedure for your organization.

No Microsoft Outlook integration

The plug-in does not interact with Microsoft Outlook.
Archiving of e-mail messages is available in another way.

It is possible to archive e-mails from your e-mail client

- Save an e-mail from the Outlook e-mail client to your computer.
- Upload this saved e-mail to O3Spaces. There are two ways to do this:
 1. Drag and drop the saved e-mail from your computer to the desired workspace (in your browser).
 2. Use the upload-button in the desired workspace.

O3Spaces Composer

Document Composition

O3Spaces Composer is an additional service on the Template Management of O3Space to create document using a user friendly wizard.

Document Composition will be available through an extra 'Document Composition' section in the Workplace ribbon.

Info: If '**Document Composition**' is configured for a template, an O3Spaces Composer wizard will appear after clicking on a listed template.
Document Composer requires extra configuration.

System Requirements

- The O3Spaces Workplace Microsoft Office plug-in is compatible with Microsoft Office 2007 SP3 (32 bit), Microsoft Office 2010 SP2 (32 bit) and Microsoft Office 2013 (32 bit) (on Windows Vista or higher).
- Microsoft .NET Framework 4 Client Profile (Standalone Installer)
 - <http://www.microsoft.com/en-us/download/details.aspx?id=24872>
- XULRunner 1.9.2.13 (32-bit) (available in the zip file)
- MS Visual Studio 2010 Tools for Office Runtime (version 4.0)
 - <http://www.microsoft.com/en-us/download/details.aspx?id=42513>
- Microsoft Office 2007 SP2 (32-bit) (latest updates), Microsoft Office 2010 (32-bit) or Microsoft Office 2013 (32-bit)
- Microsoft Windows Vista, 7 or 8 (latest updates)

- Note:** The Office plug-in does not integrate with Microsoft Outlook.
- Note:** Microsoft Office 64-bit is not supported.
- Note:** The Office plug-in is not supported on Mac OS.
- Note:** The availability of the office integration functionality depends on your Workplace Edition.
- Note:** The availability of the Template Management and Composer functionality depends on your Workplace Edition and Document Solution.
- Note:** User account control (UAC) restrictions may in specific cases lead to configuration issues with respect to the plug-ins.
- Note:** Firewalls, Pop-up blockers and other malware protection software should be configured to allow all Workplace components to operate unhindered. (e.g. keeping in mind TCP-port assigned for the installation and allowing Java components to access network resources)
- Note:** The plug-in is not embedded in the Workplace software but is available for download from <https://support.o3spaces.com>.

Contact O3Spaces

O3Spaces B.V.

PO Box 483,
2800 AL, Gouda
The Netherlands

+31 182 680 269

info@o3spaces.com | www.o3spaces.com

Disclaimer

All product names, logos, brands and any other trademarks contained in this documents and the associated software are the property of their respective owners.

Copyright © 2006 - 2014 O3Spaces B.V. All rights reserved.